

# WOL.NET 2007

Wake on LAN and Shutdown integration for  
Microsoft® Systems Management Server 2003  
Microsoft® System Center Configuration Manager 2007



**Your advantages at a glance**

- | Reduction of energy costs by the Shutdown option
  
- | Repetitive tasks (e.g. daily) for waking up your systems in the mornings and shutting down in the evenings
  
- | High flexibility for using, detached from the workflows of Microsoft products
  
- | Software distribution at off-peak-hours
  
- | Unattended deployment of applications
  
- | Scheduled software distributions (important for critical update such as hotfixes, service packs and database upgrades, etc.)
  
- | Reduced down-times for employees
  
- | Deployment of extensive Software packages at night (e.g. Office 2007)
  
- | Remarkably faster deployment of software packages due to prevention of too high client utilization achieved by avoidance of parallel processing at work-hours
  
- | Logging of all relevant information with an export possibility to PDF or Excel

**WOL.NET 2007:**

**Wake on LAN and Shutdown integration for SMS 2003 and SCCM 2007**

WOL.NET 2007 is a web-based application for easily and comprehensively waking up and powering down workstations for unattended software distribution purposes.

WOL.NET offers integration into Microsoft® Systems Management Server (SMS) 2003 or System Center Configuration Manager (SCCM): Existing collections can be used to wake up and shutdown all enabled workstations. Software distributions, like hotfixes and servicepacks can be scheduled and occur at any time now, even at weekends or at night on powered-off workstations.

Besides being able to guarantee the availability of workstations with the help of WOL.NET , its „Shutdown“ functionality can help you save electricity and therefore decrease your companies' TCO to a great extent, especially on extensive software distributions with many workstations involved.

With WOL.NET also repetitive jobs can be configured, so that for instance, a group of workstations wake up or power down at a specific time every day or once a week. It's easy to calculate a ROI (Return On Investment) through effective power savings.

Furthermore, WOL.NET also integrates a useful extension into the context menu of the SMS administrator console. The creation of jobs and pinging all workstations within a collection can be easily triggered from the console as well as waking up and shutting down single workstations immediately.

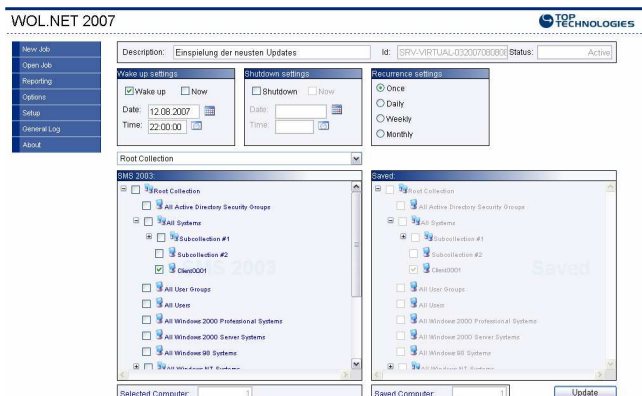


Image: Creation of a time-triggered job

### Core functions

- | Easy installation and configuration of all components with MSI technology
- | Wake on LAN and/or Shutdown of single workstations as well as whole SMS collections
- | Hybrid Mode: Broadcasting of magic packets for Wake on LAN across subnets either by using directed broadcasts or with the help of a master/slave functionality
- | Exclusion of critical workstations from either Wake on LAN and/or Shutdown
- | Creation of time triggered jobs (incl. period of validity)
- | Configuration of repetitive jobs, for instance - for daily or weekly occurrences
- | Browsing within all SMS collections
- | Not connected to SMS Workflows, different applications are possible e.g. power savings or virus scanning at night
- | Overview of the clients' most important network parameters
- | Comprehensive reporting of all jobs (incl. a complete job and PC history)
- | Reports are exportable to Excel or PDF
- | Integration into Microsoft® Reporting Services
- | Automated cleanup of the SQL database
- | Definition of company work times
- | Comment fields for exclusions
- | Integration of Wake on LAN, Shutdown and Ping for the context menu of Microsoft® SMS 2003
- | Pinging of all workstations of a collection for additional validation of the job results

### Software requirements

- | Microsoft® Windows 2000 Server or Microsoft® Windows Server 2003
- | Microsoft® SQL Server 2000 (SP3a or above)
- | Internet Information Server 6.0 (IIS 6.0)
- | .NET Framework 2.0 (included in MSI)
- | Microsoft® Systems Management Server 2003 or Microsoft® Systems Center Configuration Manager 2007

### System requirements

- | Microsoft® Windows 2000, Microsoft® Windows XP or Microsoft® Windows Vista as client operating system
- | Advanced Configuration and Power Interface (ACPI)- enabled workstations (BIOS, Network Interface Card and OS)

The screenshot shows a web-based report interface. At the top, there is a 'Close' button. Below it, the 'Available Computer' section shows 'Client0001' with a 'Run Report' button. The 'Available Jobs' section shows a job named 'Einspielung der neuesten Updates' with a 'Run Report' button. The main section is 'Computer History', which includes a table with 5 jobs. The table has columns for Job, Mode, Time, Computer State, and Feedback. The jobs listed are: Updates (08/01/2007) - Wakeup - 08/01/2007 22:00:00 - Finished - Computer has been successfully started (192.168.10.1); Shutdown - PowerOff - 08/02/2007 01:00:00 - Finished - Computer has been successfully shutdown; Systemtest - Wakeup - 08/04/2007 06:30:00 - Finished - Computer has been successfully started (192.168.10.1); Shutdown - PowerOff - 08/08/2007 20:00:00 - Finished - Computer has been successfully shutdown; Hotfixes (08/17/2007) - Wakeup - 08/17/2007 22:00:00 - Finished - Computer has been successfully started (192.168.10.1). The interface also includes navigation buttons like 'Find | Next', 'Select a format', and 'Export'.

Job	Mode	Time	Computer State	Feedback
Updates (08/01/2007)	Wakeup	08/01/2007 22:00:00	Finished	Computer has been successfully started (192.168.10.1)
Shutdown	PowerOff	08/02/2007 01:00:00	Finished	Computer has been successfully shutdown
Systemtest	Wakeup	08/04/2007 06:30:00	Finished	Computer has been successfully started (192.168.10.1)
Shutdown	PowerOff	08/08/2007 20:00:00	Finished	Computer has been successfully shutdown
Hotfixes (08/17/2007)	Wakeup	08/17/2007 22:00:00	Finished	Computer has been successfully started (192.168.10.1)

Image: WOL.NET Reports

**TOP TECHNOLOGIES CONSULTING GmbH**

Buchenweg 11-13  
25479 Ellerau  
Germany

Telefon +49 (4106) 7777-220

Telefax +49 (4106) 7777-333

[info@toptechnologies.com](mailto:info@toptechnologies.com)

[www.toptechnologies.com](http://www.toptechnologies.com)



ISV/Software Solutions  
Advanced Infrastructure Solutions