

REMOTE POWER MANAGEMENT 2009 FOR SCCM

Wake on LAN, Shutdown, Energy Monitor and Self-Service Portal integration for Microsoft® Systems Management Server 2003

Microsoft® System Center Configuration Manager 2007

The enhanced successor of **WOL.NET 2007** with a lot of new features



Your advantages at a glance

- | Software deployments, upgrades, data backups, inventories and critical patches can take place outside of your working hours.
- | Increase of productivity since there are no downtimes based on software deployments anymore
- | No service personnel needed to turn on the machines physically for maintenance after working hours
- | Significant higher success rate of software deployments
- | Inventory data automatically without the need of manual gathering through service personnel
- | Improved administrative control of your companies' computers due to an extended maintenance time frame at nights or on week-ends
- | Central and web based console, therefore time and location independent useable
- | High appliance flexibility since RPM is detached from Microsoft® products workflows
- | Additional value due to the integration into SCCM
- | Actions on single computers or whole collections in SCCM/SMS
- | No client side installation needed
- | Easy installation of the central components

RPM 2009 for SCCM:

Remote Power Management 2009 for SCCM (RPM 2009) is the advanced and improved version of the successful WOL.NET 2007 with a lot of new functions based on Best Practice experiences.

Remote Power Management 2009 for SCCM is:

a web-based application that can be used by administrators from within a central console (alternatively direct from SCCM) or by an employee from a Self-Service Portal in order to wake up or shut down computers easily or to achieve an active energy-monitoring.

Further more RPM 2009 is integrated into Microsoft® Systems Management Server (SMS) 2003 or System Center Configuration Manager (SCCM) 2007 with additional benefit:

Existing collections can be selected to wake up instantly (direct wake up) or on a scheduled timeframe (on schedule) by Wake on LAN or to shutdown systems (all or only specific) of the collection (static or dynamic).

Therefore you can deploy software like hotfixes or service packs unattended anytime, even at night or at weekend on turned off workstations without the need to stress your employees with installations or maintenance within working hours. The success rate of patch management and software deployments will be significantly increased.

Additionally the active power management assists in reducing the energy consumption of your environments' computers, since they can stay powered off when they are not needed. RPM will only start them, when they are needed.

RPM 2009 is completely agent-less i.e. no client-side installation is needed which leads to a fast implementation of RPM 2009.

The flexible installation of the central components (MSI technology) is guided by an easy-to-use installation wizard.

Your advantages at a glance

- | Large packages can be deployed at nights or on weekends.
- | Scheduled software distribution (important for critical updates such as hotfixes, service packs and database upgrades and also useful for database transpositions)
- | Restart of computers after installations out of working hours
- | Recent patch state on computers
- | No user interaction needed
- | Instant wake up or shutdown of computers (Real-Time Operations)
- | Fast ascertainable system state (on/off) of the managed computer (Power State Control)
- | Software deployments can be done faster; the parallel use of different applications with their disadvantages can be shortened
- | Enhanced usage of infrastructure resources at nights or on weekends
- | Installation and operations manual available
- | Configuration of recurring jobs (daily, weekly, monthly)
- | Resource-saving through configuration of job execution (load balancing)

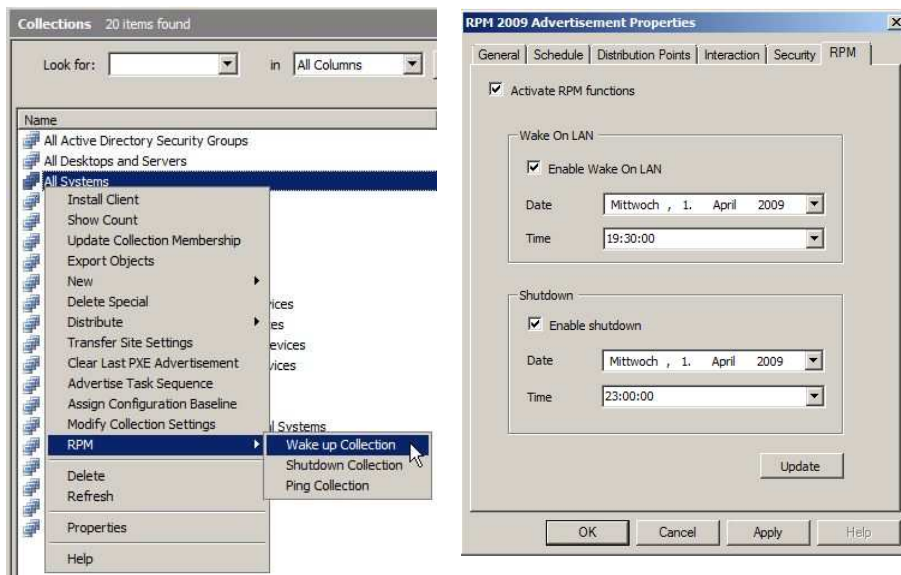


Figure: SCCM Integration

A [comprehensive manual](#) assists in installing and using RPM 2009 with its descriptions of the various modules and illustrations of different case scenarios.

In order to [configure a recurring job](#) you can choose daily, weekly or monthly. Execution and batch processing has been implemented to make your network and server load controllable. Therefore you obtain additional maintenance timeframes at night which can be used for all tasks requiring the systems to be turned on (e.g. nightly virus scans, defragmentation, software deployment, etc.). Alternatively you can let RPM turn off your computers to save energy.

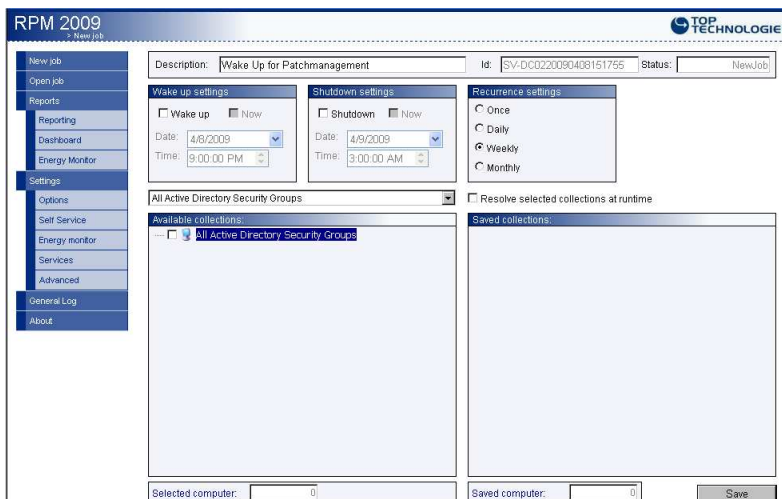


Figure: Generating scheduled jobs

Your advantages at a glance

- | Transparency concerning energy consumption (Client Power usage)
- | Decrease of energy costs with energy monitoring and shutdown functionality (Client Power State Management)
- | Central control of energy consumption - your specified systems shut down in the evening and wake up in the morning as scheduled.
- | Additional decentralized control of a single systems energy consumption with Self-Service Portal
- | The users do not need to leave their computers turned on for maintenance: You control when the computers have to be available (on demand)
- | Waking up of specific computers can be done by their respective users (Self-Service)
- | Purpose built yet intuitive user interface/operation even for non technical employees
- | Time and location independent wake up of needed systems achievable through web connection (Maintenance)
- | User can access their computers out of working hours and commercial premises
- | The user can see his computers' energy consumption
- | The user himself can support the decrease of energy consumption
- | Self assignment of computers optional available

The active energy monitoring gathers current data regarding the energy consumption of your environment and creates a visual report based on a process of consolidation and evaluation (potential for energy-savings). The integrated and automated shutdown functionality can provide enormous cost-savings. The decrease of the energy consumption becomes noticeable while looking over a lot of computers, it leads to a fast return on invest and supports the Green IT topic.

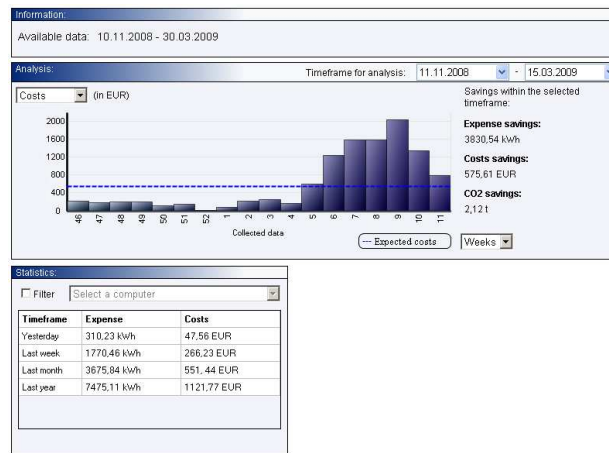


Figure: Energy Monitor

The integrated Self-Service Portal enables your employees to wake up their computers independently from the Administrator Console both with direct or recurring jobs. This way your employees can access their computers time and location independent via remote start up (e.g. VPN/RAS connection). A user account may have multiple computers assigned and vice versa. Of course a user can only wake up systems through the Self-Service Portal that are assigned to him. To make this process easy you can optionally enable the self-assignment functionality.

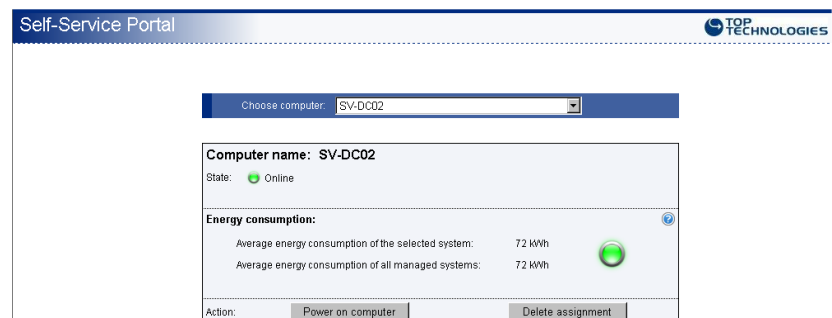


Figure: Self Service Portal

Your advantages at a glance

- | Central system state at a glance
- | Graphical view of success rates
- | Logging of all relevant information and exporting functionalities to Excel and PDF
- | Working hours can be configured in order to prevent accidental maloperations.
- | Clear validity of jobs in order to prevent malfunctions
- | Systems can be excluded centrally
- | Scalable due to a modular design and multi-service-configuration
- | TOP TECHNOLOGIES CONSULTING optionally offers the service of implementation
- | Interesting scale of prices for huge volumes
- | Best Practice Approach

A central Dashboard presents the essential system parameters and provides clarity as well as enhanced possibilities to support your business. Every information concerning executed jobs and active services are summarized well-arranged. Therefore you can verify the services status and the success rate of the jobs at a glance.

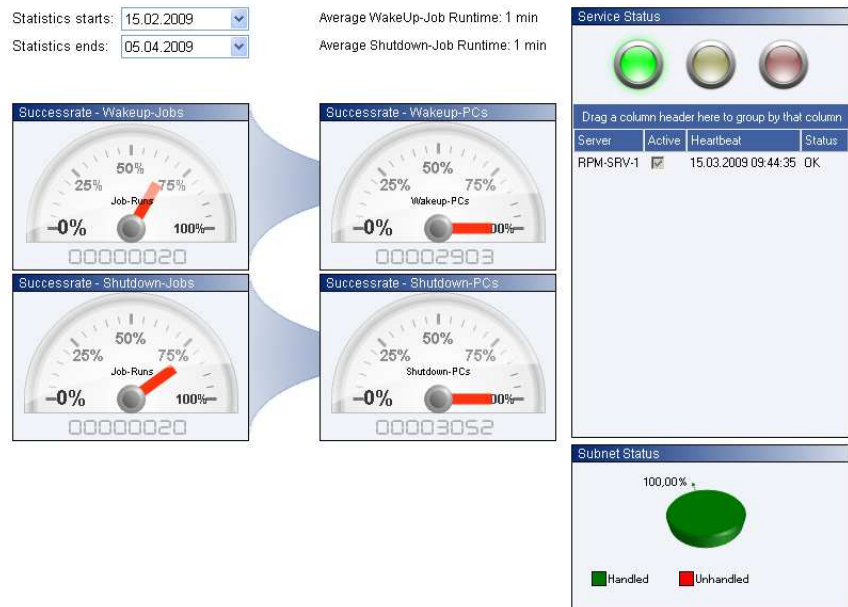


Figure: Dashboard

Due to enhanced reporting functionalities you can see more detailed information and meaningful single reports anytime you like.

Additional reliability is given in form of a notice in case a job would run within your configured working hours / online times. Every job may have a validation time to prevent an automatic wake up / shutdown job in unwanted times.

Specific computers can also be entirely excluded (e.g. server systems) from a central position.

RPM 2009 is scalable in order to adopt to large environments independently whether you use the Single-Master mode (one service) or Multi-Master mode (multiple services). RPM can be used flexible and grows with its or more over: with **your** tasks and requirements.

Core functions

- | Wake on LAN and/or Shutdown of single PC-workstations or whole SMS collections (dynamic / static)
- | Installation of every component with MSI technology, no client side component (no rollout) needed
- | Integrative and non-integrative mode for Microsoft® System Center Configuration Manager (SCCM) 2007
- | Central configuration of all components
- | Configuration of recurring jobs e.g. for daily or weekly execution (including validation time)
- | Dashboard: Central view for essential key data and system state (success rates, amount of jobs, average peak)
- | Integrated Self-Service module for employees / systems
- | Hybrid mode: Magic-packets can be sent both with Multi-Master and Directed Broadcast
- | Wake on LAN and/or shutdown exclusion of critical systems (server system, VIP-systems etc.)
- | Comment function for exclusion rules
- | Browsing through all SMS collections
- | View on important network parameter of single PC workstations
- | Meaningful reporting of all created jobs (including a job history)
- | Reports can be exported to Excel or PDF
- | Enhanced reporting of energy consumption
- | Integrates into Microsoft® Reporting Services
- | Specification of company working hours (online times)
- | Integration of the Wake on LAN technology (WoL) into Microsoft® SMS 2003 context menus and SCCM 2007 advertisements.
- | Every computer inside a selected collection can be pinged for validation (alive status)

Software requirements

- | Microsoft® Windows Server 2003 or Microsoft® Windows Server 2008
- | Microsoft® SQL Server 2000 (SP4), Microsoft® SQL Server 2005 or Microsoft® SQL Server 2008
- | Internet Information Services 6.0 (IIS 6.0) or above
- | .NET Framework 2.0¹
- | Microsoft® Systems Management Server 2003 or Microsoft® System Center Configuration Manager 2007 (for integrative mode)

System requirements

- | Microsoft® Windows 2000, Microsoft® Windows XP, Microsoft® Windows Vista or Apple Mac OS X² as client operating system
 - | Advanced Configuration and Power Interface (ACPI)- capable PC-workstations (BIOS, network interface and operating system)
- Alternative
- | Advanced Power Management (APM)- capable PC-workstations (BIOS, network interface and operating system)

¹ The RPM 2009 Administrations Console needs the Microsoft .NET Framework 3.5 SP1

² Wake On LAN from resting state / no Shutdown

TOP TECHNOLOGIES CONSULTING GmbH

Buchenweg 11-13
25479 Ellerau
Germany

Telefon +49 (4106) 7777-220

Telefax +49 (4106) 7777-333

info@toptechnologies.de

www.toptechnologies.de



ISV/Software Solutions
Advanced Infrastructure Solutions